

# LiveOn Product Overview



Reliability, Productivity, Security

Leverage Japanese technology quality for a successful online conferencing experience.



## LiveOn usage

### Conferences and inquiries

Even while you are on a business trip, the system can be used to participate in extraordinary meetings, or to answer inquiries from branch offices or customers. Since there is no travelling time required, you can easily adjust your schedule.

### Seminars and training

Seminars can be transmitted to all locations at once, so you don't have to repeat seminars, and you can minimize the effects of inter-regional information gap.

### Monitoring and inspection

Use the system to check warehouse and factory statuses, check inventory, and quickly confirm the situation whenever a problem arises.

### KEY POINTS of LiveOn

- Seamless remote communication with clear audio quality.
- Supports multi-devices, so you can connect to everyone, anytime, anyplace.
- Supports network cameras.
- Allows bi-directional audio and visual communication with up to 20 participants simultaneously.
- Records audio and video to share and review conferences and seminars.
- Remote desktop-like functionality allows you to operate remote PCs.
- Intuitive interface for ease of use.
- Secure online meetings.

### Seamless remote communication with clear audio quality

Enjoy communication at a sampling rate of up to 32 kHz, and CD level clear audio quality.

Our unique, proprietary technology comes with auto bandwidth control and jitter buffer control features, which enable seamless remote communication with clear audio quality, even in low bandwidth environments. Stressful web conferences among multiple parties with their frequent signal drops and delays are now a thing of the past, and you can now enjoy relaxed web conferences among multiple parties, with faster decision making.

### Supports multi-devices

In addition to Windows PC, also supports iOS and Android OS. As long as you have an Internet connection, you can hold emergency meetings and attend conferences from wherever you are.

LiveOn logo is a trademark or a registered trademark of Japan Media Systems Corporation in Japan.

## IP camera connection

This unique feature enables network camera images to be fed into LiveOn. You can use LiveOn to check images from network cameras installed at remotely located warehouses and factories.

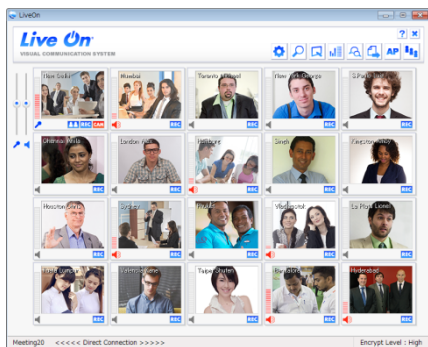
In the event of an emergency or a problem, you don't need to go on-site, but can quickly ascertain the situation, make fast decisions and give instructions, resulting in improved traceability and customer satisfaction.



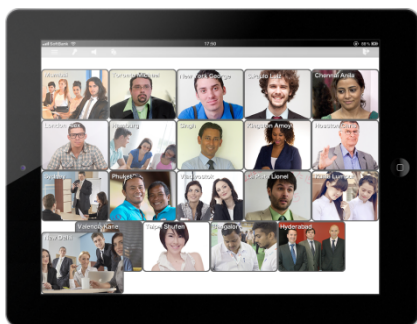
IP camera images supported

## HD Video meetings with up to 20 participants

Bi-directional audio and visual communication with up to 20 participants.



Images from the PCs of 20 participants



Images from the iPads of 20 participants

## Unlimited participants

Multi-user mode allows you to stream seminars to an unlimited number of participants.



Multi-user mode images

## Recording

You can record the audio and video of conferences and seminars. This makes it easy to share conference content with people who were not able to attend, to review study sessions, and to compile minutes of meetings. In addition to audio and video, you can record entire desktops, so this function is very useful when you want to create videos to train people how to use applications, etc. The media playback function makes it easy to share recorded audio and video on LiveOn.

## HD Sharing desktop and controlling remote PC

Use the desktop sharing feature to conduct training in applications and the like. You can also take control of a remote PC, which means that your system administrators can provide technical support, such as settings changes to PCs in branch offices, or providing system maintenance to customers in remote locations.

## Secure online meeting

256-bit AES data encryption over SSL protocol allows top level secured data transmitting. Our bank and government customers run the most reliable online meeting system for their daily use.

## User intuitive interface

Our intuitive interface is super simple to use, so system administrators are freed from hassle.

## Operating environment

### OS:

Windows Vista SP2 or higher,  
Windows 7 SP1 or higher,  
Windows 8.1, Windows 10

### CPU:

Celeron 1.3GHz  
(Recommended: Core 2 Duo 2GHz)

### Memory:

1GB or more (Recommended: 2GB or more)

### HDD:

20MB or more (Recommended: 100MB or more)

### Browsers:

The most current version of Internet Explorer available for a supported operating system / Microsoft Edge

Firefox / Opera / Google Chrome  
(Latest versions)

※DirectX 9.0c or higher

### iOS

iOS 4 or later supported in up to LiveOn 1.1.5

iOS 4.3 or later supported in up to LiveOn 1.1.6 to 2.0.4

iOS 5.1.1 or later supported in up to LiveOn 2.1.0 or later

### Android

Android 4.0.3 or later

---

\* Please check our website for latest details on smartphone and tablet terminal operating environments and operation verified devices.

<http://www.liveon.ne.jp/english/product/mobile.html>

---

To learn more about LiveOn, visit [www.liveon.ne.jp/english/](http://www.liveon.ne.jp/english/)



Japan Media Systems Corporation  
2F No.2 Denpa Bldg., 2-14-10 Sotokanda,  
Chiyoda-Ku, Tokyo, 101-0021 Japan  
TEL: +81-3-5297-5511